

Yeovil Country Park Wildlife

Bats



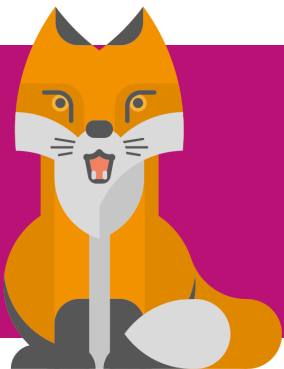
At Yeovil Country Park there are 9 species of bat, including the very rare species *Barbastelle* and *Nathusius Pipistrelle* bats. Bats are flying animals and are nocturnal which means they are active at night. Bats have quite good eyesight but need to be able to 'see' in the dark. They do this using a skill called echolocation. They make noises and wait for the sound waves to bounce back off objects (an echo), if it doesn't bounce back then they can safely fly forward. They can tell the distance of various objects by how quickly the sound waves bounce back to them.

Badgers

At Yeovil Country Park we have a family of badgers that live underground. You can easily identify where they live as they create large mounds of earth on the ground where they dig out their dens, which are called sets. Badgers are quite shy animals and normally only come out of their sets at night to find food and scurry around the woodland floor looking for their next meal. One of their favourite things to eat are earth worms.



Foxes



Foxes have made a home of Yeovil Country Park and possibly some of the surrounding streets. They aren't afraid of town life and find them a prime place to find some left over, thrown away food for their dinner. Foxes also eat rabbits and other animals and birds which live in the woods. Foxes compete for food against badgers but have also been seen to live alongside them. Although we have seen the fox and badgers in our park squabbling!

Swans

Swans are regularly seen at Yeovil Country Park, and have successfully raised families their each year. Swans mate for life and each mate is protective of the other. Swans even touch beaks to kiss. When they kiss, their necks form a heart. Swans form nests near the water's edge made of mats of reeds and plants. Their eggs are about 4 inches long. When the babies, known as cygnets, are born, they can swim immediately.



Mice



Mice such as the wood mouse, dormouse and field mouse can be found at Yeovil Country park. They can live in woods, grasslands and manmade structures but they typically make a burrow underground to help protect them from predators. Their natural predators are cats, birds of prey and foxes. Their brown fur helps them camouflage in the leaves on the woodland floor. Mice like to eat fruits, seeds and grains, but they are omnivorous, which means they eat both plants and meat.

Find more activities at
www.southsomerset.gov.uk/childrensactivities

Now you've read about Yeovil Country Park wildlife why not write a woodland story with animals as the characters?

