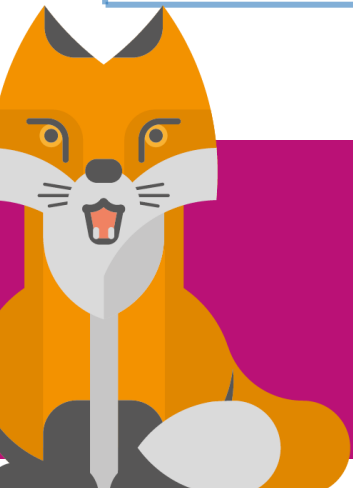


FRIDAY FUNDAY!!



Draw your favourite place in South Somerset that makes you enjoy nature

Use your imagination to draw your favorite space to run and play in South Somerset. Think about what animals might live there and draw them into the scene. In a short sentence explain what makes this space so great.

A large, empty rectangular box with a thin blue border, intended for children to draw their favorite place in South Somerset.

Help us share some inspirational images. We would like to raise the spirits of those isolating and social distancing by sharing your great drawings on our Facebook page. Send us your drawing and name to communications@southsomerset.gov.uk to be featured on our page and help boost the spirits of our communities.

Find more activities at www.southsomerset.gov.uk/childrensactivities