

Create your own minibeast

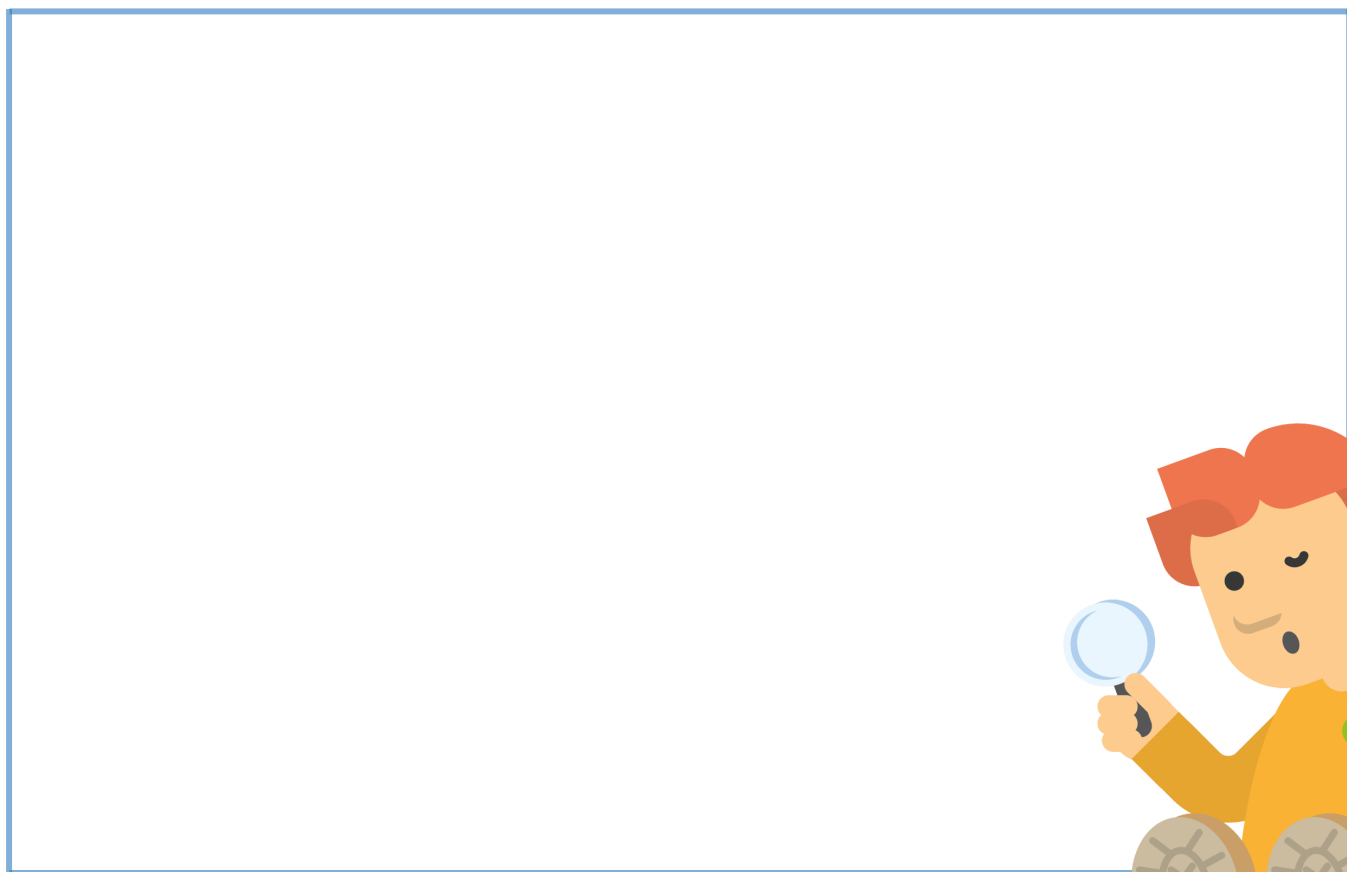
Use pens and pencils create your own minibeast insect. Draw out your design and add comments.

Think about where your minibeast might live, what it might eat or if it will be prey to another animal and what life cycle will it have? Will your minibeast be kind and helpful like bees and butterflies who pollinate plants to help them reproduce and grow? Will it have special features like a stinger to help protect itself?

Insects are identified by some key characteristics, so make sure your minibeast features them.

Top tip:

An insect is identified as having six legs, three body sections (a head, chest and stomach). Insects also have a pair of antennae, eyes and usually wings. They live a three or four stage life cycle, for example a butterfly hatches from an egg, turns into a caterpillar and then a butterfly.



Now you have designed it can you make it out of Lego?

Find more activities at
www.southsomerset.gov.uk/childrensactivities