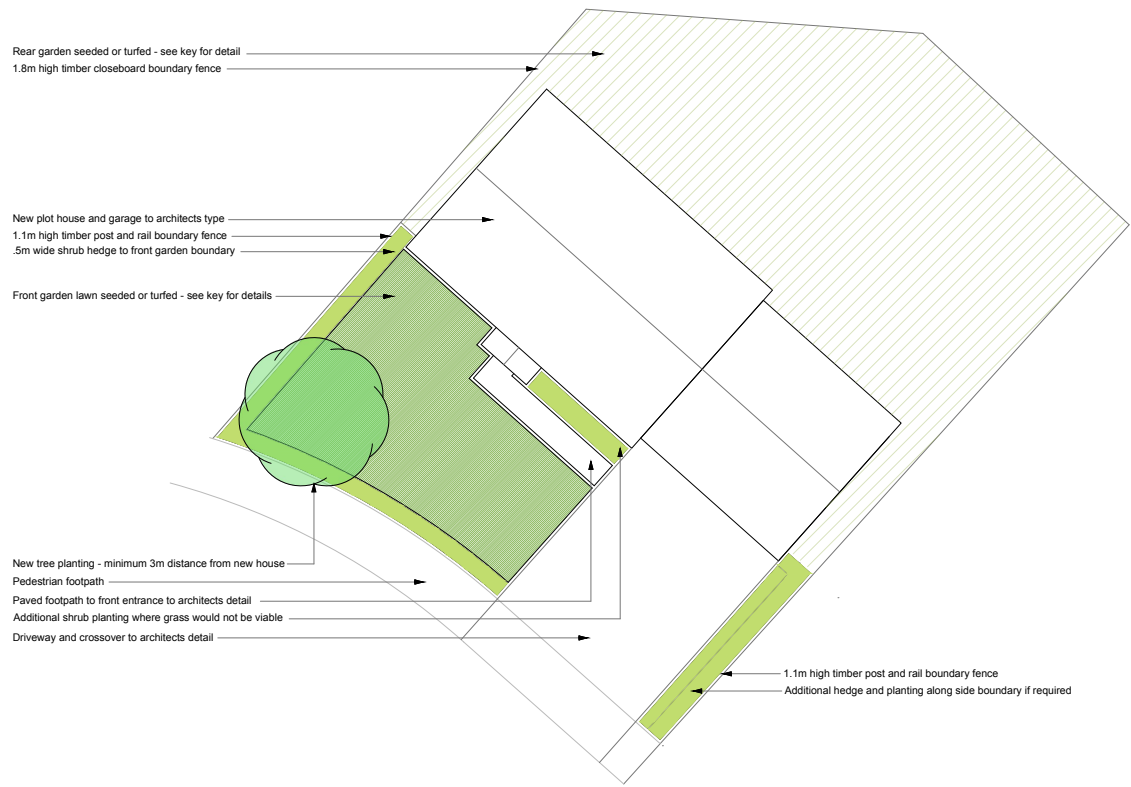


General Arrangement Indicating Landscaping for New Plots

- Note:
- Refuse and cycle storage to be located as architects details
 - Rear patio/terrace to be located and specified as architects details



KEY - Grass

- Front garden lawn areas: Typical sown seed mixture for turf to include dwarf perennial ryegrass slender creeping red fescue and strong creeping red fescue
- Rear garden lawn areas: Typical sown seed mixture for turf to include dwarf perennial ryegrass slender creeping red fescue and strong creeping red fescue
- Amenity grass areas: For general public use grass composed of bent grass and fescues with the addition of some dwarf perennial ryegrass and smooth-stalked meadow-grass. This combination of grasses gives both fine structure and resilience to wear for pathways and parking areas. The inclusion of white clover will further enhance the swards ability to withstand general use by the public
- Meadow margin: A 5m deep buffer to enhance existing bio-diversity and create areas for wildlife. Grass to consist of fine grasses and more robust species such as cocksfoot and meadow fescue. Located along boundary hedging and within the amenity grass areas.
- Meadow bund's: Earthed and grassed bunding to reuse excavated soils and enhance bio-diversity for wildlife

KEY - Planting

- Ornamental Planting: 500mm wide hedge to the boundary of each property, using evergreen and deciduous shrubs. Additional areas are planted with a mixture of shrubs and perennials
 - Native hedge along boundary line: Species mix to include:
Hawthorn (*Crataegus monogyna*)
Hazel (*Corylus avellana*)
Blackthorn (*Prunus spinosa*)
Field Maple (*Acer campestre*)
Holly (*Ilex aquifolium*)
- It may also be worth considering including additional climbers/shrubs in the new hedgerow as these will increase the value to wildlife and attractiveness of the hedge at a ratio of 1 plant per 10 metres.
Recommendations: Honeysuckle, Guilder Rose & Dog Rose.

Key - New Trees

- New tree planting adjacent to housing to be large to medium growth trees in a narrow crowned form with a minimum clear stem of 2m
- New tree planting to amenity and marginal areas to be large, medium and small native species in standard and feathered forms and varieties
- Large native species such as oak and beech
- Medium native species such as field maples and wild cherries
- Small native species such as crab apples and hazels

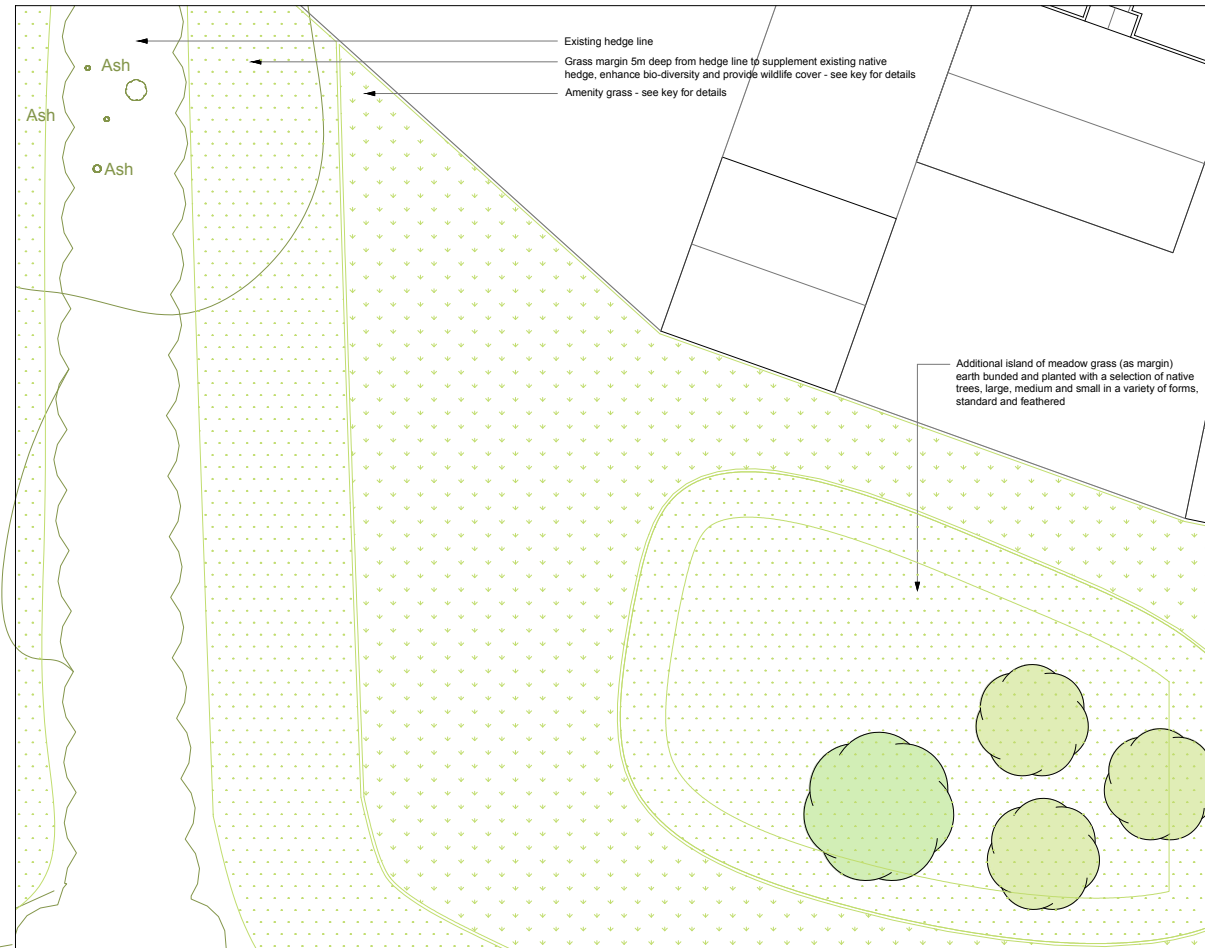
KEY - Landscape Surface

- Pedestrian footpath: Self binding gravel or as architects detail
- 5-35mm Ornamental Chipped Bark
Fire-resistant, in accordance with BS 4790:1987 - All Borders to be spread with bark mulch.

KEY - Existing

- Existing trees: see arboricultural survey and tree protection plan for details
- Existing native hedge: see ecologists to details. Gaps and damaged hedge to be infilled and replanted with new native hedging

General Arrangement Indicating Landscaping for Grassed Areas and Existing Hedging



Notes:
See planning notes on separate page

Rev	Date	Note

For planning submission - NOT FOR CONSTRUCTION
Do not dimension from this drawing

Client: AHC & Wyke Farms

Project: Castle Cary Housing Development

Title: Indicative Landscaping Principles

Initial	Designer	Client	Project	Type	Quote nr	Dwg Nr	Rev
Dwg Nr:	CWLD	AWF	CC	LA	00328	04	

Scale (@A3): 1:250

DATE: 26.06.19

©CWLD 2019

Clive Warwick **Landscape Design**
Horticultural Consultants & Commercial Landscape Designers

07810621973
cwltdtd@gmail.com
www.clivewarwicklandscapedesign.co.uk